



Background and Technology Overview



January 17, 2019



Pond Level

12hr | 24hr | 7days | 1wk

R MSL

04/23/2016 19:06

Level

929.29 Ft MSL

Open Flow - 191.6 CFS





About Opti

Our Mission

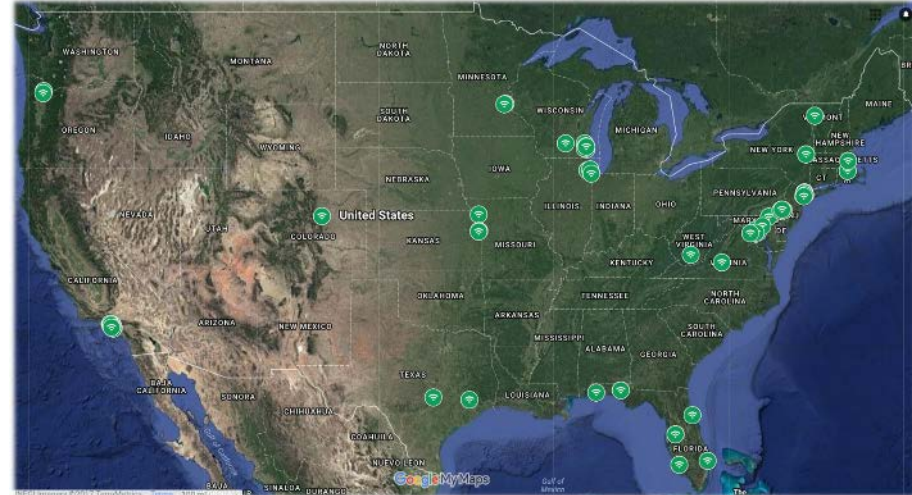
Opti is a technology company that enables communities and businesses to continuously improve stormwater management.

Opti delivers real-time visibility, adaptive asset control, and a platform for smart city initiatives.

Our Presence

The Opti Platform is used in 21 US states to improve water quality, prevent flooding, and reduce combined sewer overflows.

Retrofits with the Opti Platform have up to 90% lower capital costs and faster deployment than existing alternatives.

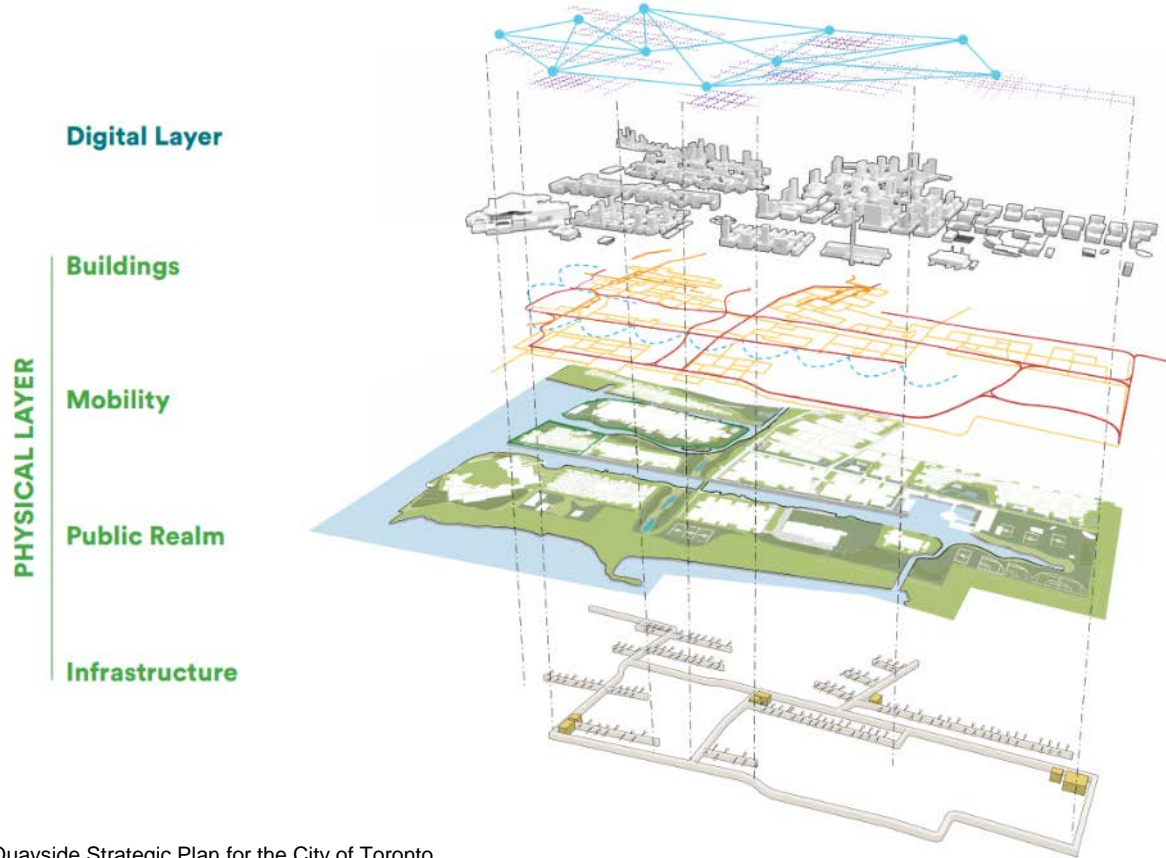


Trusted Technology Partners





The cloud platform for stormwater management

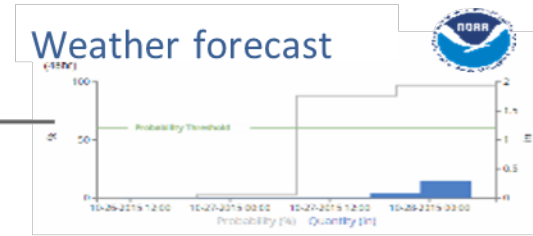
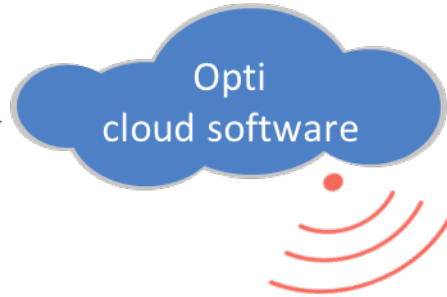




Intelligent technology



web-based dashboard



control panel

Enables Dynamic and Adaptive Water Storage Management



runoff



stormwater infrastructure

infiltration

water level sensor

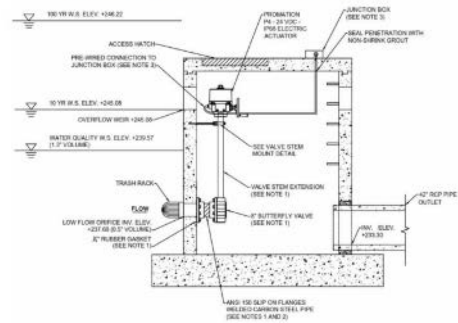
actuated valve outlet or pump



Example Retrofit: Anne Arundel County, MD



OUTLET STRUCTURE MODIFICATIONS





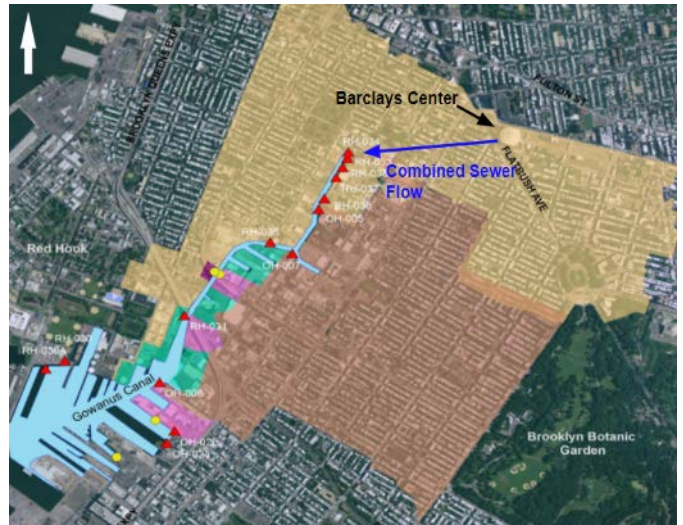
Example Retrofit: Gowanus Canal, Brooklyn, NY

BACKGROUND

- Releases 377MM gallons of CSOs annually
- New York City will construct 12MM gallons of storage at a cost of more than \$800MM
- After this, there will still remain 110MM gallons of CSOs released annually

EXPECTED OUTCOMES

- Retrofitting the Barclays Center will prevent almost 10MM gallons of wet weather flow annually
- This project alone will save an estimated \$25MM in new storage costs



Barclays Center located in the Gowanus Canal combined sewer flow



Example Retrofit: Kansas City, MO



BACKGROUND

- Releases 6.4 billion gallons of CSOs annually
- Kansas City (KCMO) will spend \$4.5 billion over 25-years to address federal consent decree
- In April 2017, KCMO retrofit a regional stormwater pond with Opti to reduce wet weather flow and the cost of compliance
- Kansas City continues to retrofit stormwater assets with the Opti Platform

OUTCOMES

*“We calculated the **cost to implement the Opti solution...at 2 cents per gallon...and that is an incredible value [compared to other storage solutions that range in price from \$3.50 to \$8 per gallon or more].”***

— Andy Shively, Special Assistant City Manager





Example Retrofit: Philadelphia, PA

Green City, Clean Waters

BACKGROUND

- Releases 11 billion gallons of CSOs annually
- Philadelphia will spend \$2.4 billion over 25-years to address federal consent order
- In November 2016, Philadelphia approved the retrofit of a commercial stormwater pond with Opti to reduce wet weather flow into City sewers

OUTCOME

The Opti pond prevented 4.9MM gallons of wet weather flow, accounting for 98% of the pond's flow into the sewer.





Thank you

Scott Landers, P.E.

slanders@optirtc.com

January 17, 2019

